

Less is not none. Less is enough. Less
is luxury. **Living** with less. Less is suc-
cess? Then go for less! There should
be more less in excess. Because less
is more and more than enough. Can
it be too much? Is living **in** a state-of-
the-art understatement overstating
it? Creating space is an art. So live
the art of reduction! Simply reduce
and thereby seduce. Unbling your life
and concentrate on the essentials.
Because **Minimal** is more. The ele-
gance and allure of minimalist **Style**,
its efficiency, its calming and relaxing
effect, its sleek serenity ...
In short: **The Beauty of Space.**

TWIN LOFT

This futuristic space was fabricated by playing with various experimental entities and light modern constructions.

Architect | Federico Delrosso Architects

Client | confidential

Gross floor area | 300 m²

Main materials | resin for any floor, metal and glass for stair system

Address | via Pietrasanta 12, Milan, Italy

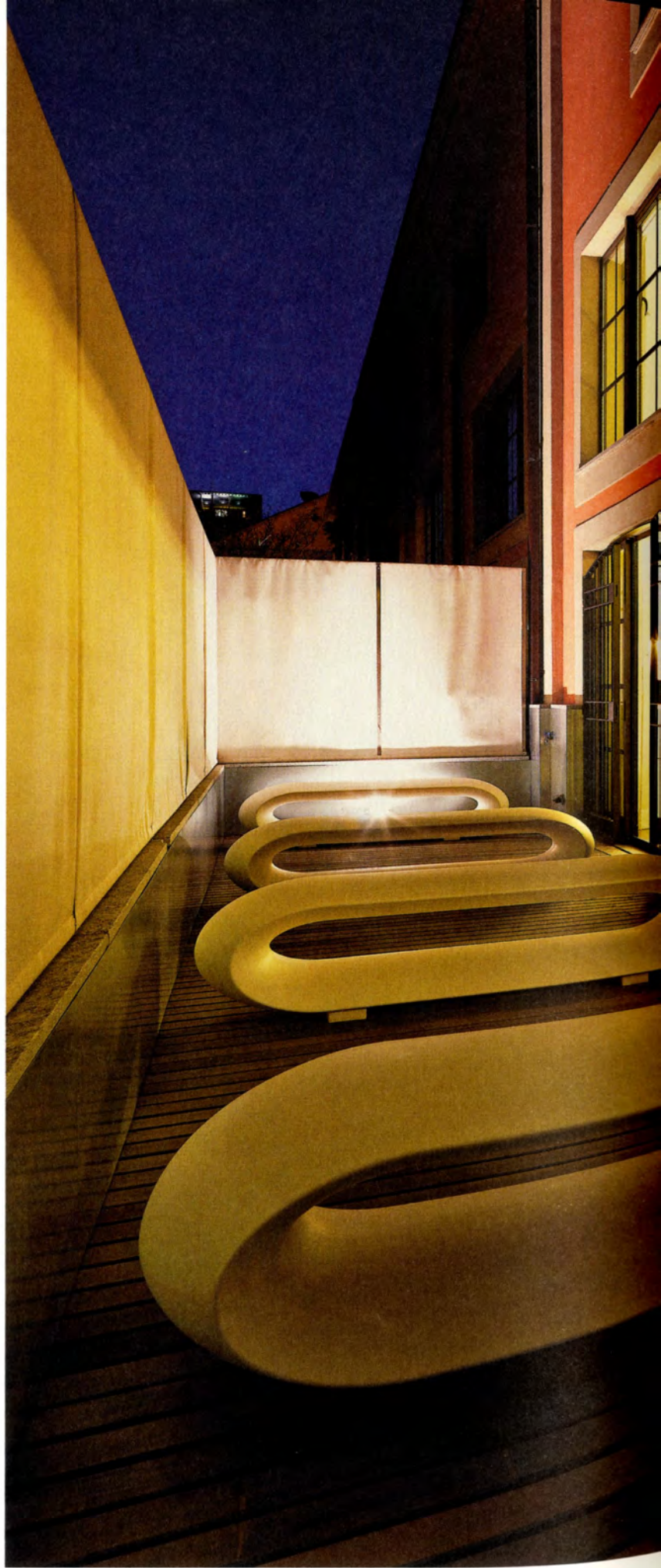
Completion | 2007

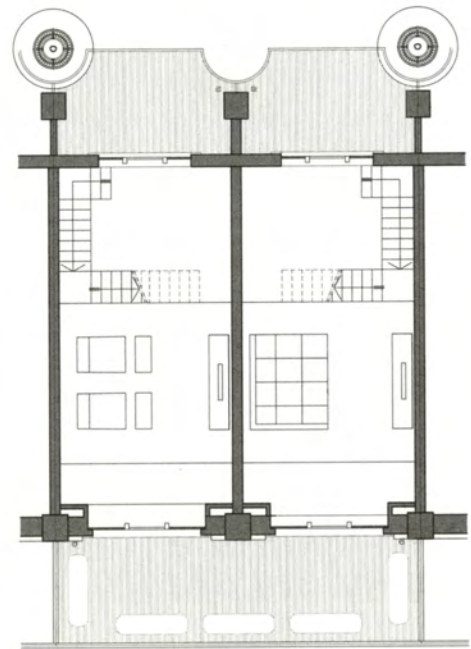
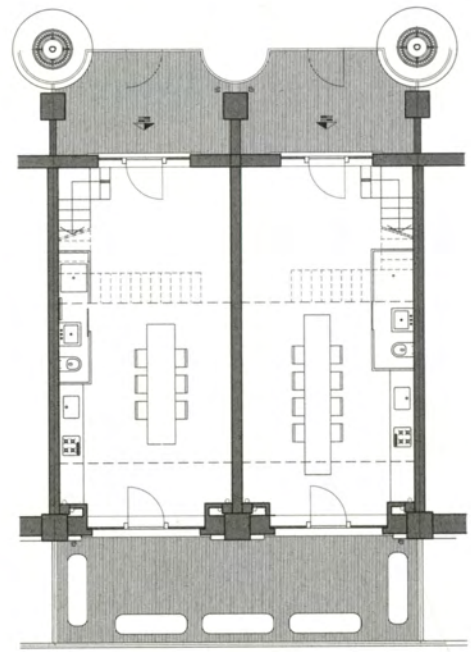
Number of residents | 2 adults



At the beginning of the 21st century Milan underwent an unprecedented period of development where industrial buildings were converted into residential units. This project involved the conversion of two building lots in a former factory into apartments. A key aspect of the design is the arrangement of the interiors: These are differentiated by their furnishings and color schemes. The ground stories of both apartments comprise an entrance, open-plan kitchen, access to a small back garden, a bathroom, and the stairs leading to the upper stories. The experimentation with symmetry has inevitably led to the invention of variants, for example with black and white, which is in itself a binary expression of a single entity divided into two complementary parts.



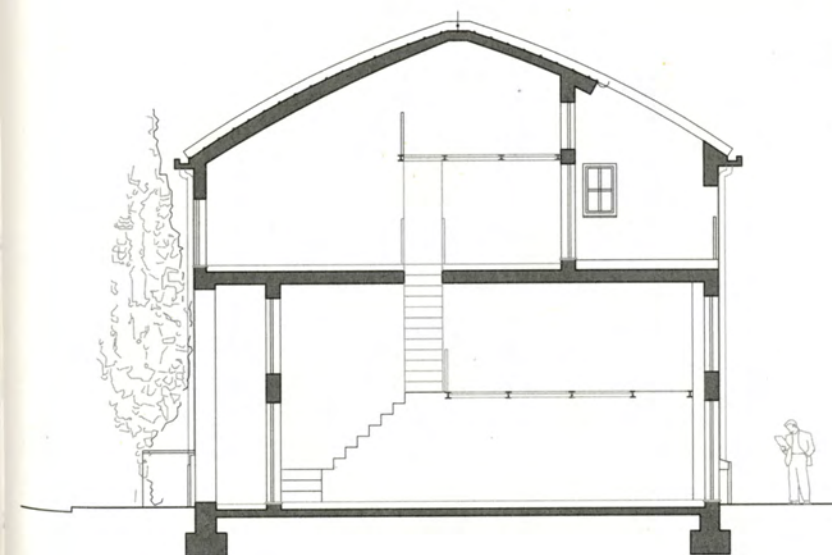






The terrace is a key focus of this design. It can be directly accessed from a number of rooms and offers a stylish and private outdoor space perfect for entertaining guests during the long summer evenings.

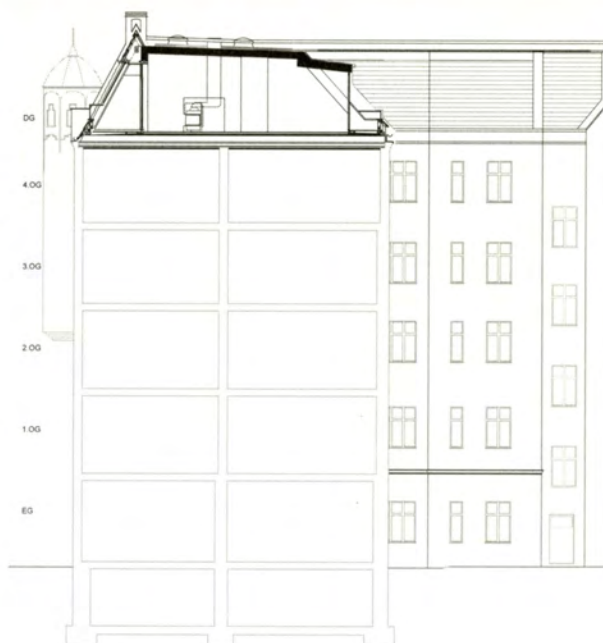




140 m² living/kitchen
 140 m² sleeping
 30 m² terrace
 20 m² bathroom



This project involved the renovation and extension of the top floor of an apartment building in Berlin-Schöneberg. A key focus of the design was the creation of a large communal area and rooms individually designed to meet the specific needs of each family member. The entrance opens out onto a large living and kitchen area. The tailor-made fireplace is located at the center of this large open-plan space. Private spaces for each family member and a separate guest room are located to the rear of the apartment. In order to provide as much storage space as possible, wall niches have been built into the rooms and corridors. Parts of the built-in furnishings have been deliberately left with untreated, light surfaces and are fully integrated into the walls.



49.88 m² living and dining
53.77 m² sleeping
13.22 m² kitchen
13.85 m² bathroom