

INTERIOR  
DESIGN

# INTERIOR DESIGN®

best of hospitality  
ARCHITECTURE & DESIGN

**best of** ARCHITECTURE & DESIGN  
**hospitality**





# Federico Delrosso Architects



2,400 sf (restaurant)  
1,600 sf (rooftop lounge)

**Clockwise from above:** PVC tubes form an ornamental canopy over the host station at CaféB. A neutral palette puts the emphasis on the food. A digitally printed photomural of library bookshelves wraps a corner outfitted with a painted-wood table and trattoria lighting by Massimiliano and Raffaele Alajmo. ➤



## CAFÉB RESTAURANT + SKYB ROOFTOP LOUNGE, NEW YORK

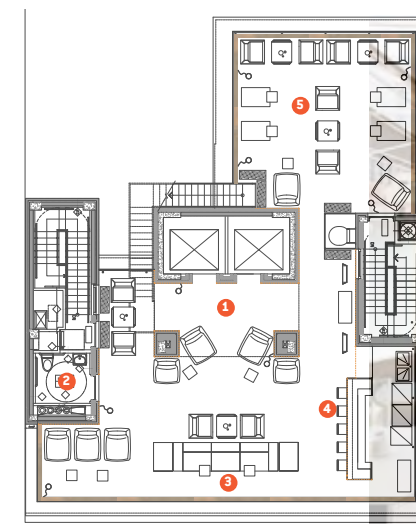
Federico Delrosso had already designed two outposts of the venerable restaurant brand Bice—in San Diego and Istanbul—when he was enlisted to tackle a new location, at New York’s Hotel Indigo. The architect conceived the stylish eatery as a love letter to Milan, the capital of contemporary Italian design—and, he notes, the pre-dinner apéritif.

Delrosso recreated the vibe of Milanese social life with open-plan spaces that weave together like a series of terraces; the casual layout encourages the eye to wander. Neutral tones of dark brown and warm beige were deemed not only suitably urbane but also the ideal backdrop for the eatery’s richly colored cuisine. Almost every element of the decor is made in Italy, from the collection of black-and-white photos to lamps by designer Davide Groppi.

The ground-floor restaurant has what the architect calls an “alter ego” on the rooftop: SkyB. This terrace is even more informal and unstructured, with a floorplan inspired by urban piazzas. Low-slung furnishings keep the emphasis on the panoramic skyline, visible as guests step off the elevator. For seating, Delrosso specified his own beanbag chaises and elemental folded-aluminium chairs, which he describes as “sculptural without feeling invasive.” (Both are manufactured by Italy’s brand Extra, which also produced the café’s stools and host station.) Glass panes along the perimeter are fritted with a gradient pattern that intensifies at the base—dissolving the boundary between architecture and cityscape, indoors and out, *Milano* and Manhattan.







0 10 20 40

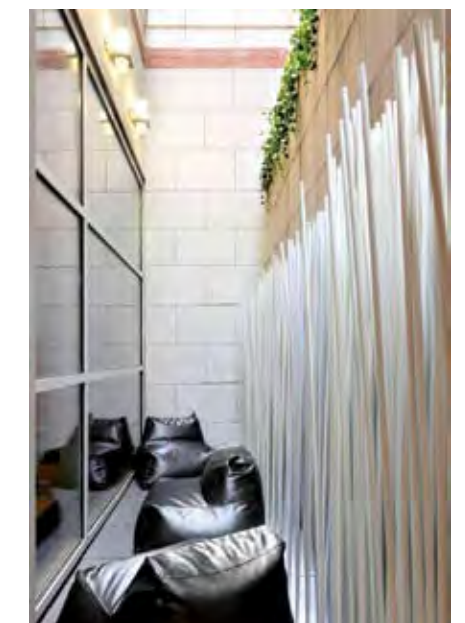
- 1 ELEVATOR LOBBY/ENTRY
- 2 RESTROOM
- 3 FRONT TERRACE
- 4 BAR
- 5 BACK TERRACE



***Clockwise from opposite top:** The L-shape rooftop lounge SkyB is furnished with Delrosso's powder-coated aluminum seats and faux-leather beanbag chaises. Fritted glass wind-breaks with a fogged pattern surround the terrace. Existing brick walls were hidden behind patinated pine planks treated to a weather-resistant finish. A forest of PVC tubing screens one wall. The lounge overlooks water towers on nearby Chelsea rooftops.*



**PROJECT TEAM** FEDERICO DELROSSO, DARIO DE SANTIS, SARA FOSCHI, EDA KOKSAL  
**GENERAL CONTRACTOR** ITALIAN FINEST CUSTOM CREATIONS  
**PHOTOGRAPHY** ADRIAN WILSON  
[www.federicodelrosso.com](http://www.federicodelrosso.com)







SANDOW MEDIA COMPANY

\$45.95

ISBN 978-0-9833263-1-1

54595>



9 780983 326311